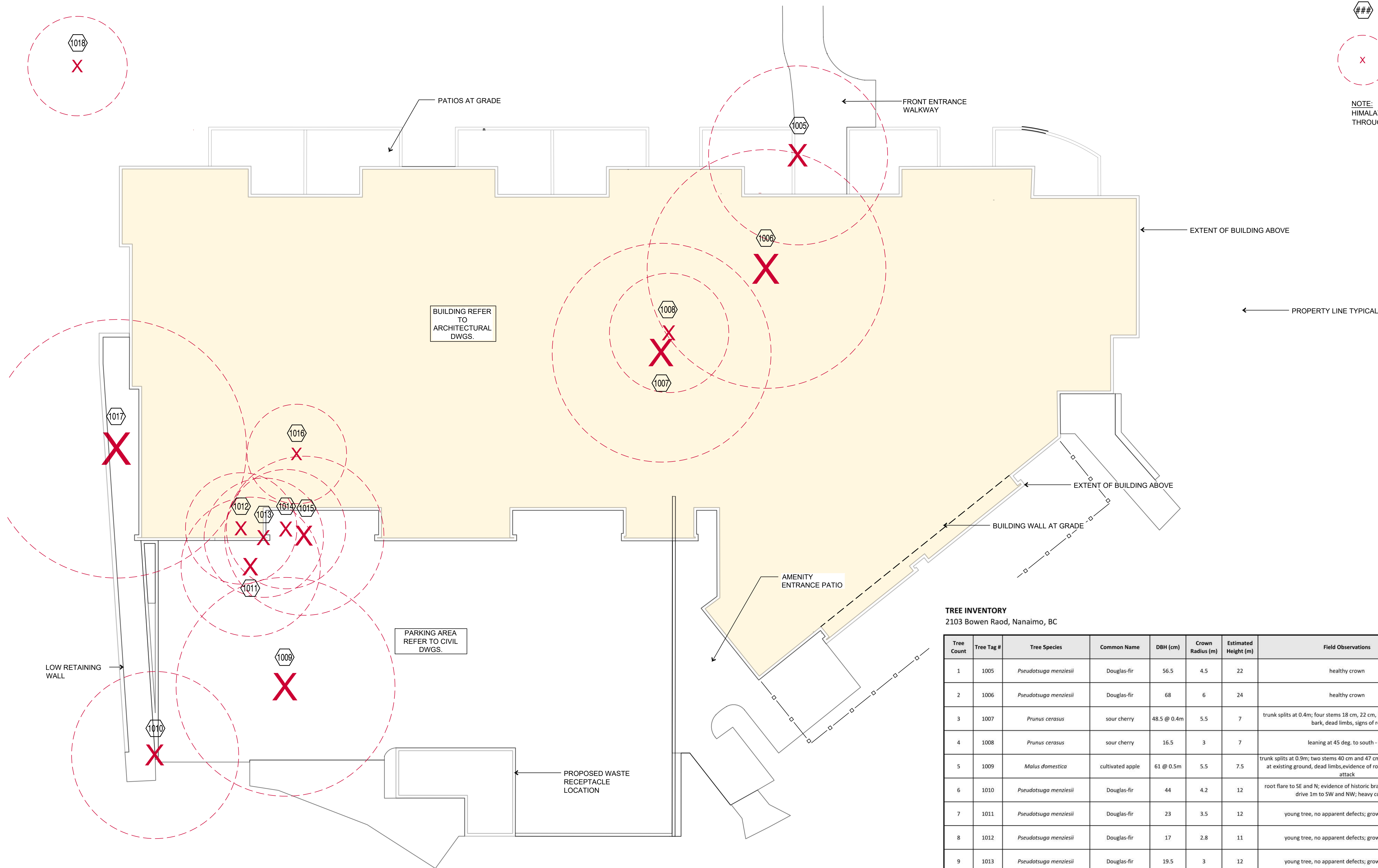


### TREE INVENTORY KEY

### EXISTING TREE - TAG REFERENCE NUMBER  
REFER TREE INVENTORY TABLE THIS SHEET FOR FURTHER INFORMATION ON TREES.

X TREE DESIGNATED FOR REMOVAL.  
EXTENT OF DRIPLINE OF EXISTING TREE RECOMMENDED FOR REMOVAL (LOCATION FROM SURVEY BY BCLS LAND SURVEYOR)

NOTE:  
HIMALAYAN BLACKBERRY IS THE DOMINANT VEGETATION SPECIES THROUGHOUT THE SITE



**TREE INVENTORY**  
2103 Bowen Road, Nanaimo, BC

Tree Count	Tree Tag #	Tree Species	Common Name	DBH (cm)	Crown Radius (m)	Estimated Height (m)	Field Observations	Ownership <sup>1</sup>	Recommend Remove / Retain	Significant Tree <sup>2</sup>
1	1005	<i>Pseudotsuga menziesii</i>	Douglas-fir	56.5	4.5	22	healthy crown	2103 Bowen Road	Remove	No
2	1006	<i>Pseudotsuga menziesii</i>	Douglas-fir	68	6	24	healthy crown	2103 Bowen Road	Remove	No
3	1007	<i>Prunus cerasus</i>	sour cherry	48.5 @ 0.4m	5.5	7	trunk splits at 0.4m; four stems 18 cm, 22 cm, 25, 12.5 cm; included bark, dead limbs, signs of rot	2103 Bowen Road	Remove	No
4	1008	<i>Prunus cerasus</i>	sour cherry	16.5	3	7	leaning at 45 deg, to south - 6m	2103 Bowen Road	Remove	No
5	1009	<i>Malus domestica</i>	cultivated apple	61 @ 0.5m	5.5	7.5	trunk splits at 0.9m; two stems 40 cm and 47 cm; no root flare evident at existing ground, dead limbs, evidence of rot, evidence of insect attack	2103 Bowen Road	Remove	No
6	1010	<i>Pseudotsuga menziesii</i>	Douglas-fir	44	4.2	12	root flare to SE and N; evidence of historic branch pruning; asphalt drive 1m to SW and NW; heavy cone crop	2103 Bowen Road	Remove	No
7	1011	<i>Pseudotsuga menziesii</i>	Douglas-fir	23	3.5	12	young tree, no apparent defects; growing in clump	2103 Bowen Road	Remove	No
8	1012	<i>Pseudotsuga menziesii</i>	Douglas-fir	17	2.8	11	young tree, no apparent defects; growing in clump	2103 Bowen Road	Remove	No
9	1013	<i>Pseudotsuga menziesii</i>	Douglas-fir	19.5	3	12	young tree, no apparent defects; growing in clump	2103 Bowen Road	Remove	No
10	1014	<i>Pseudotsuga menziesii</i>	Douglas-fir	17	3	10	young tree, no apparent defects; growing in clump	2103 Bowen Road	Remove	No
11	1015	<i>Pseudotsuga menziesii</i>	Douglas-fir	30	4	12	young tree, no apparent defects; pitch spots; growing in clump	2103 Bowen Road	Remove	No
12	1016	<i>Pseudotsuga menziesii</i>	Douglas-fir	14	2.5	7.5	young tree, no apparent defects; growing in clump	2103 Bowen Road	Remove	No
13	1017	<i>Malus domestica</i>	cultivated apple	60	6.5	7	trunk splits at 0.15m; two stems 44 cm and 41 cm; significant rot, large branch failures, lean to south; structural defects; evidence of fill placed at trunk; root collar flare not visible	2103 Bowen Road	Remove	No
14	1018	<i>Crataegus columbiana</i>	Columbia hawthorn	19	2.5	4	multi-stem; three stems 12.5, 6.5, and 13; poor structural form, evidence of historical pruning, significant blackberry bushes at base and climbing in tree, lean to SE	Boundary Tree <sup>3</sup>	Remove <sup>3</sup>	No

<sup>1</sup> As per the Topographic Survey, 2103 Bowen Road, Nanaimo - Revision No. 2, dated March 25, 2019 completed by Harbour City Land Surveying Ltd.

<sup>2</sup> As per the City of Nanaimo Bylaw No. 7126, A Bylaw for the Management and Protection of Trees within the City of Nanaimo

<sup>3</sup> A Boundary Tree is one that grows over the property line and so becomes jointly owned. Permission from both property owners of a jointly owned tree must be obtained prior to removal. It is strongly recommended that legal advice be retained prior to the cutting and/or removal of a Boundary Tree.

C RE-ISSUED FOR DP 2020-08-14  
B DP RESUBMISSION FOR BC HOUSING REVIEW 2019-05-08  
A DEVELOPMENT PERMIT APPLICATION 2019-04-02

# DESCRIPTION DATE

PROFESSIONAL SEAL



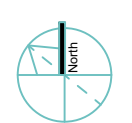
## BOWEN AFFORDABLE HOUSING

2103 Bowen Road, Nanaimo, BC

PROJECT #: 33610019.01

## LANDSCAPE

## TREE MANAGEMENT PLAN



# T01

SCALE: 1 : 100



### LANDSCAPE MATERIALS KEY

- PARKING SURFACE REFER OTHER DRAWINGS
- STD. BRUSHED CONCRETE SURFACE
- MAINTAINED ON-SITE TURF
- MAINTAINED OFF-SITE TURF (N.I.C.)
- 75-100mm RIVER ROCK ON LANDSCAPE FABRIC.
- CONCRETE UNIT PAVERS
- SHRUB PLANTING BED - LOW SHRUBS OR GROUNDCOVER
- SHRUB PLANTING BED - 0.6-1.2m HGT.
- BIKE RACK (QTY AS SHOWN)
- PLANTER
- 1800mm LENGTH PICNIC TABLE
- SITE BOULDER - ~ Ø 750-1000mm
- PRIVATE PATIO FENCE - REFER TO ARCHITECTURAL DWGS.
- AMENITY FENCE - REFER TO ARCHITECTURAL DWGS.
- PROPERTY LINE

### LANDSCAPE NOTES

- THIS DRAWING DEPICTS FORM AND CHARACTER AND IS TO BE USED FOR DEVELOPMENT PERMIT SUBMISSION ONLY AND IS TO BE READ IN CONJUNCTION WITH THE ARCHITECTURAL AND ENGINEERING DRAWINGS ISSUED FOR THE SAME PURPOSE.
- THIS DRAWING IS NOT INTENDED FOR USE AS A CONSTRUCTION DOCUMENT.
- ALL MEASUREMENTS ARE IN MILLIMETRES UNLESS OTHERWISE NOTED
- ALL LANDSCAPE WORK SHOWN ON THIS DRAWING WILL CONFORM TO OR EXCEED THE MINIMUM STANDARDS ESTABLISHED IN THE CANADIAN LANDSCAPE STANDARDS (CURRENT EDITION).
- ALL LANDSCAPE WORK SHOWN ON THIS DRAWING IS CONCEPTUAL IN NATURE AND REFLECTS THE MINIMUM ACCEPTABLE STANDARD, QUALITY AND DEVELOPMENT PERMIT REQUIREMENTS OF THE MUNICIPALITY.
- PLANT MATERIAL SHALL BE NURSERY GROWN STOCK, LOCALLY HARDENED AND ACCLIMATIZED UNLESS APPROVED OTHERWISE.
- ALL TURF AREAS SHALL HAVE A MINIMUM TOPSOIL/GROWING MEDIUM DEPTH OF 100mm U.N.O.
- ALL SHRUB PLANTING BEDS SHALL RECEIVE A MINIMUM OF 450mm DEPTH OF GROWING MEDIUM U.N.O.
- ALL PLANTING BEDS AND TREE WELLS SHALL RECEIVE 75mm DEPTH APPROVED BARK MULCH U.N.O..

### SHRUB PLANTING

SHRUBS	BOTANICAL NAME	CONTAINER	SPACING (M)
DWARF STRAWBERRY TREE	ARBUTUS UNEDO 'COMPACTA'	#2	1.00
DWARF DOGWOOD	CORNUS SERICEA 'KELSEY'	#1	0.60
SALAL	GAULTHERIA SHALLON	#1	0.60
HIDCOTE BLUE LAVENDER	LAVANDULA ANGUSTIFOLIA 'HIDCOTE BLUE'	#1	0.60
PRIVET HONEYSUCKLE	LONICERA PILEATA	#2	1.00
OREGON GRAPE	MAHONIA AQUIFOLIUM	#1	
DULL OREGON GRAPE	MAHONIA NERVOSA	#1	0.75
WESTERN SWORD FERN	POLYSTICHUM MUNITUM	#1	0.75
DWARF ROSE	ROSA GYMNOCARPA	#1	0.75
DWARF ARCTIC WILLOW	SALIX PURPUREA 'NANA'	#1	1.00
SWEET BOX	SARCOCOCCA HOOKERIANA HUMILIS	#1	0.60
BUMALD SPIRAEA	SPIRAEA X BUMALDA	#1	0.75
COMMON WHITE SNOWBERRY	SYMPHORICARPOS ALBUS	#1	1.00
EVERGREEN HUCKLEBERRY	VACCINIUM OVATUM	#2	0.75

NOTE: SCHEDULE DENOTE SHRUB SPECIES ONLY. TOTAL ESTIMATED SHRUB QTY. THIS PROJECT AS FOLLOWS:  
 • ESTIMATED 1 SHRUB PER 0.8m2 SHRUB PLANTING AREA  
 •• TOTAL SHRUB PLANTING AREA = 298m2  
 •• 300m2 / 0.8m SPACING = 470 SHRUBS (APPROX.)

### GROUND COVER & PERENNIAL PLANTING

GROUND COVERS	BOTANICAL NAME	CONTAINER	SPACING
KINNIKINNICK	ARCTOSTAPHYLOS UVA-URSI	10CM	300mm
SHEEP FESCUE	FESTUCA OVINA	#1 POT	450mm
JOHNSON'S BLUE GERANIUM	GERANIUM X 'JOHNSON'S BLUE'	10CM	600mm
MAJESTIC LIRIOPE	LIRIOPE MUSCARI 'MAJESTIC'	10CM	300mm
HAMELN DWARF FOUNTAIN GRASS	PENNISETUM ALOPECUROIDES 'HAMELN'	#1 POT	600mm
WESTERN SWORD FERN	POLYSTICHUM MUNITUM	#1 POT	750mm
EMERALD CARPET CREEPING RASPBERRY	RUBUS CALYCINOIDES 'EMERALD CARPET'	10CM	300mm
HANCOCK CORALBERRY	SYMPHORICARPOS X CHENAULTII 'HANCOCK'	#1 POT	600mm

### TREE PLANTING KEY

TREES	QTY	COMMON NAME	BOTANICAL NAME	CONTAINER	CAL. (MM)	HGT. (M)
	4	PAPERBARK MAPLE	ACER GRISEUM	B&B	60 MULTI-STEM	
	3	MAGYAR GINKGO	GINKGO BILOBA 'MAGYAR'	B&B	60	
	1	HONEYCRISP APPLE	MALUS DOMESTICA 'HONEYCRISP'	B&B	40	
	1	LIBERTY APPLE	MALUS DOMESTICA 'LIBERTY'	B&B	40	
	4	VANDERWOLF'S PYRAMID PINE	PINUS FLEXILIS 'VANDERWOLF'S PYRAMID'	B&B		2.0
	1	JAPANESE TREE LILAC	SYRINGA RETICULATA	B&B	60	
	1	SAWLEAF ZELKOVA	ZELKOVA SERRATA 'GREEN VASE'	B&B	60	



NOTE: REFER TO CIVIL DRAWINGS FOR SITE GRADING AND UTILITY SERVICING